



MONTHLY MEMBERSHIP PROGRESS REPORT

District 325A2

Results as of: 5/31/2015

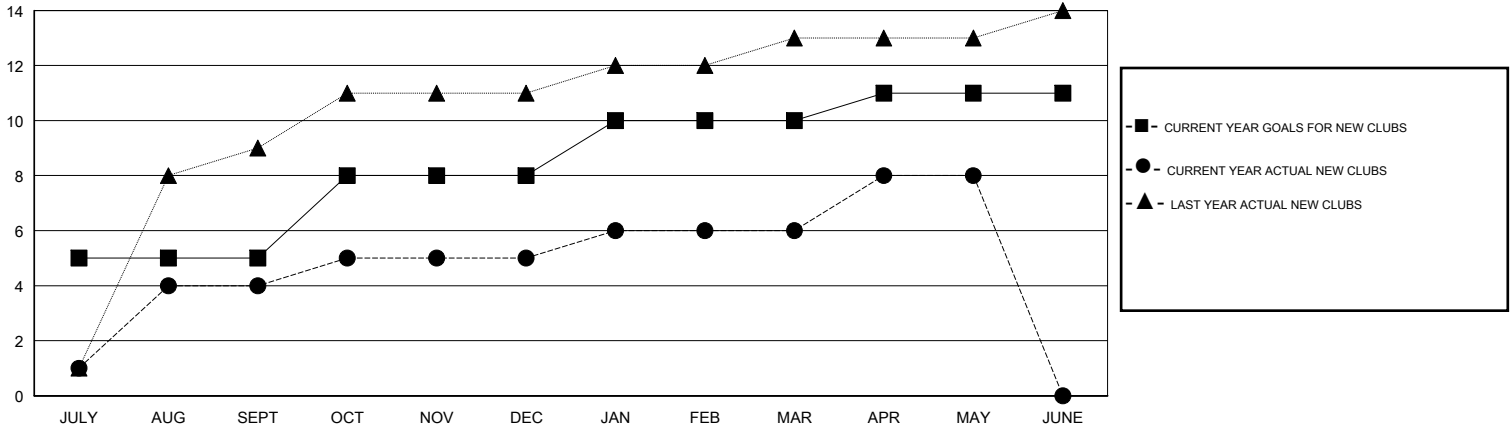
GMT: NAZMUL HAQUE

LOCATION NEPAL

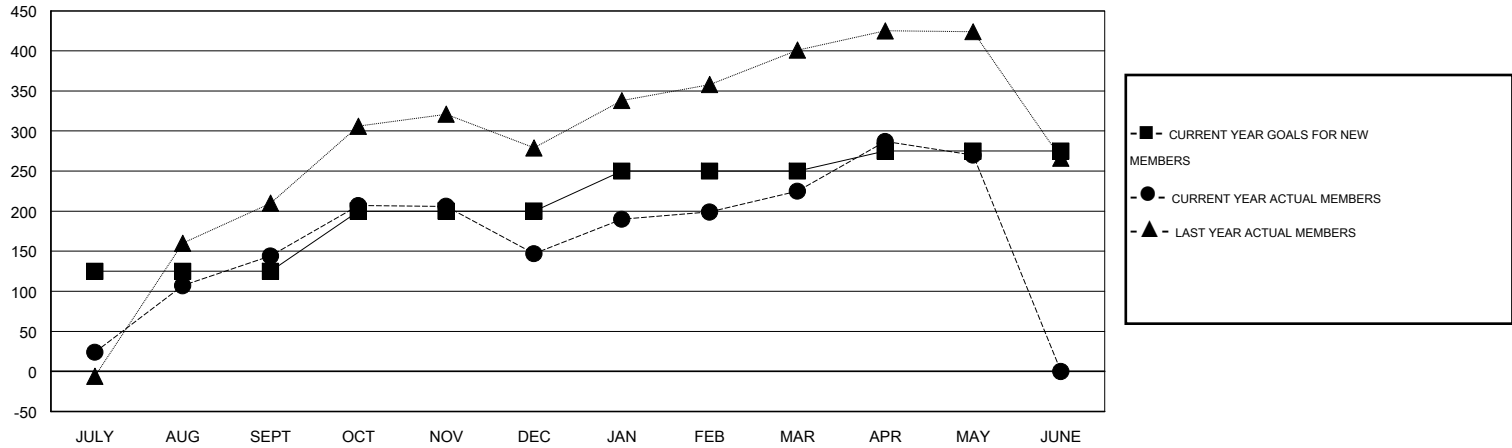
GMT CA 6

| Clubs | | | | | Members | | | | |
|-----------------------|---------------|-----------|---------------|---------------|-----------------------|-----------------|-------------------------------|-----------------|---------------|
| RESULTS FOR 2014-2015 | | | | | RESULTS FOR 2014-2015 | | | | |
| QUARTER | NEW CLUB GOAL | NEW CLUBS | DROPPED CLUBS | NET GAIN/LOSS | QUARTER | NEW MEMBER GOAL | CHARTER AND NEW MEMBERS ADDED | DROPPED MEMBERS | NET GAIN/LOSS |
| JULY/AUG/SEPT | 5 | 4 | 0 | 4 | JULY/AUG/SEPT | 125 | 215 | 71 | 144 |
| OCT/NOV/DEC | 3 | 1 | 2 | -1 | OCT/NOV/DEC | 75 | 158 | 155 | 3 |
| JAN/FEB/MAR | 2 | 1 | 2 | -1 | JAN/FEB/MAR | 50 | 159 | 81 | 78 |
| APR/MAY/JUNE | 1 | 2 | 0 | 2 | APR/MAY/JUNE | 25 | 88 | 43 | 45 |

GOALS AND ACTUAL NEW CLUBS CUMULATIVE



GOALS AND ACTUAL MEMBERS CUMULATIVE



| | | | |
|------------------------|---|----------------------------|----------------|
| DROPPED CLUBS: 4 | 75 CLUBS OF 105 ADDED 1 OR MORE NEW MEMBERS | <u>GENDER DISTRIBUTION</u> | |
| <u>DROPPED MEMBERS</u> | | MALE | 1,870 (75.10%) |
| DECEASED | CLICK HERE FOR HEALTH ASSESSMENT DATA | FEMALE | 620 (24.90%) |
| CLUB CANCELLED | | FAMILY UNIT MEMBERS | 1,314 |
| OTHER | | HEAD OF HOUSEHOLD | 515 |
| TOTAL | | NON-HEAD OF HOUSEHOLD | 799 |